

## Guidelines for building in Ruby Fires ceramic bio ethanol burners

### General guidelines:

- Ruby Fires ceramic burners are decorative fires and not primarily a heating appliance as such.
- For indoor use only.
- Do not use in places where there is a lot of draft.
- Make sure there is enough ventilation in the room.
- Bio ethanol is a highly flammable liquid and needs to be handled with care.
- Materials around the burner can heat up. (risk of burn marks)
- Only to be used by adults of 18 years or older.
- Keep children and pets at a safe distance of the fire.
- Make sure that all gas pipes in the surroundings are disconnected.
- Use LEF bio-ethanol (or an bio-ethanol with the same composition) and original Ruby Fires decoration materials only.



Ruby Fires bio-ethanol burner

### Minimum room size:

Type burner	Minimum room size	Air refreshment
4114	75 m3	Make sure there is sufficient ventilation by means of a ventilation hole or window and/or a crack underneath a door. On two locations opposite to each other.
4120	75 m3	
5820	105 m3	
8014L	120 m3	

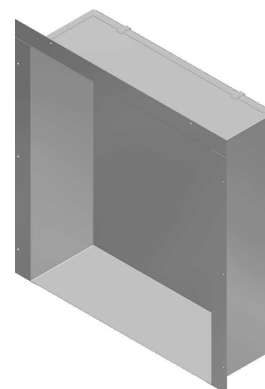
## INSTRUCTIONS FOR BUILDING IN INSERTS

### Cut out dimensions:

Bio insert small	660 mm x 420 mm x 230 mm (hxwxh)
Bio insert large	660 mm x 600 mm x 230 mm (hxwxh)
Bio insert XL	490 mm x 890 mm x 230 mm (hxwxh) (with a strip of 910 mm at the bottom)
Bio insert XXL	490 mm x 1210 mm x 230 mm (hxwxh) (with a strip of 1240 mm at the bottom)

### Instructions for building in inserts:

- When making a gap for building in an insert, make sure that any material, which is in direct contact with the insert, is heatproof (see examples of permitted building materials).
- There should be 50 mm of open space on each side of the insert, which is to be filled up with insulation material (see examples of permitted building material).
- Place the insert in the gap and make sure the insert is levelled.
- Secure the insert to the wall through the screw holes in the flange.
- Make sure that the screws are fastened tightly.
- Finish the flange if desired with non-combustible material (see examples of permitted building material)
- Place the Ruby Fires ceramic burner in the insert.
- Place the connectors and the glasses on the burner.
- If applicable place the decoration material such as pebbles and/or ceramic logs around the burner opening. Make sure the decoration material is not in direct contact with the flames.



Ruby Fires build in insert

## **Guidelines for building in Ruby Fires ceramic bio ethanol burners**

- Keep flammable objects and materials such as curtains, decoration and/or furniture at a minimum distance of 1 meter of the insert.

### **INSTRUCTIONS FOR BUILDING IN SEPARATE BURNERS (WITHOUT INSERT)**

#### Cut out dimensions:

Ceramic burner, type 4114B / 4114S	412 mm x 142 mm x 78 mm (lxwxh)
Ceramic burner, type 4120B	410 mm x 204 mm x 78 mm (lxwxh)
Ceramic burner, type 5820B / 5820S	580 mm x 204 mm x 78 mm (lxwxh)
Ceramic burner, type 8014LS	822 mm x 158 mm x 78 mm (lxwxh)

#### Instructions for building in separate burners (without insert):

- When making a gap for building in an insert, make sure that any material, which is in direct contact with the insert, is heatproof (see examples of permitted building materials).
- Maintain a minimum height of 400 mm above the burner.
- Make sure that the finishing above the burner is made of heatproof material (see examples of permitted building materials).
- In case more burners are placed next to each other, keep 100 mm distance between the burners and the sides.
- Place the Ruby Fires ceramic burner in the gap.
- Make sure the burner is levelled.
- Place the connectors and the glasses on the burner.
- If applicable place the decoration material such as pebbles and/or ceramic logs around the burner opening. Make sure the decoration material is not in direct contact with the flames.
- Keep flammable objects and materials such as curtains, decoration and/or furniture at a minimum distance of 1 meter of the burner.
- Use LEF bio-ethanol (or an bio-ethanol with the same composition) and original Ruby Fires decoration materials only.

### **EXAMPLES OF PERMITTED BUILDING MATERIALS**

The below mentioned building materials are incombustible and have an isolating function. Of course other comparable materials are also permitted.

- PROMAFOUR® plate
- PROMATECT® plate
- Super-Isol plate
- PROMAGLAF® isolation sheet
- Insulfrax isolation sheet



Isolation sheet

***Make sure to have read and understood the user's manual before using your Ruby Fires ceramic burner.***